

COLLECTION IMAGING
LIGHTING SETUP

WET BATS

(TYPE SPECIMENS)

LIGHTING SETUP

LENS USED: 24-70mm, 100mm macro both with polarizer

APERTURE: f16 for 24-70, f10 for 100mm

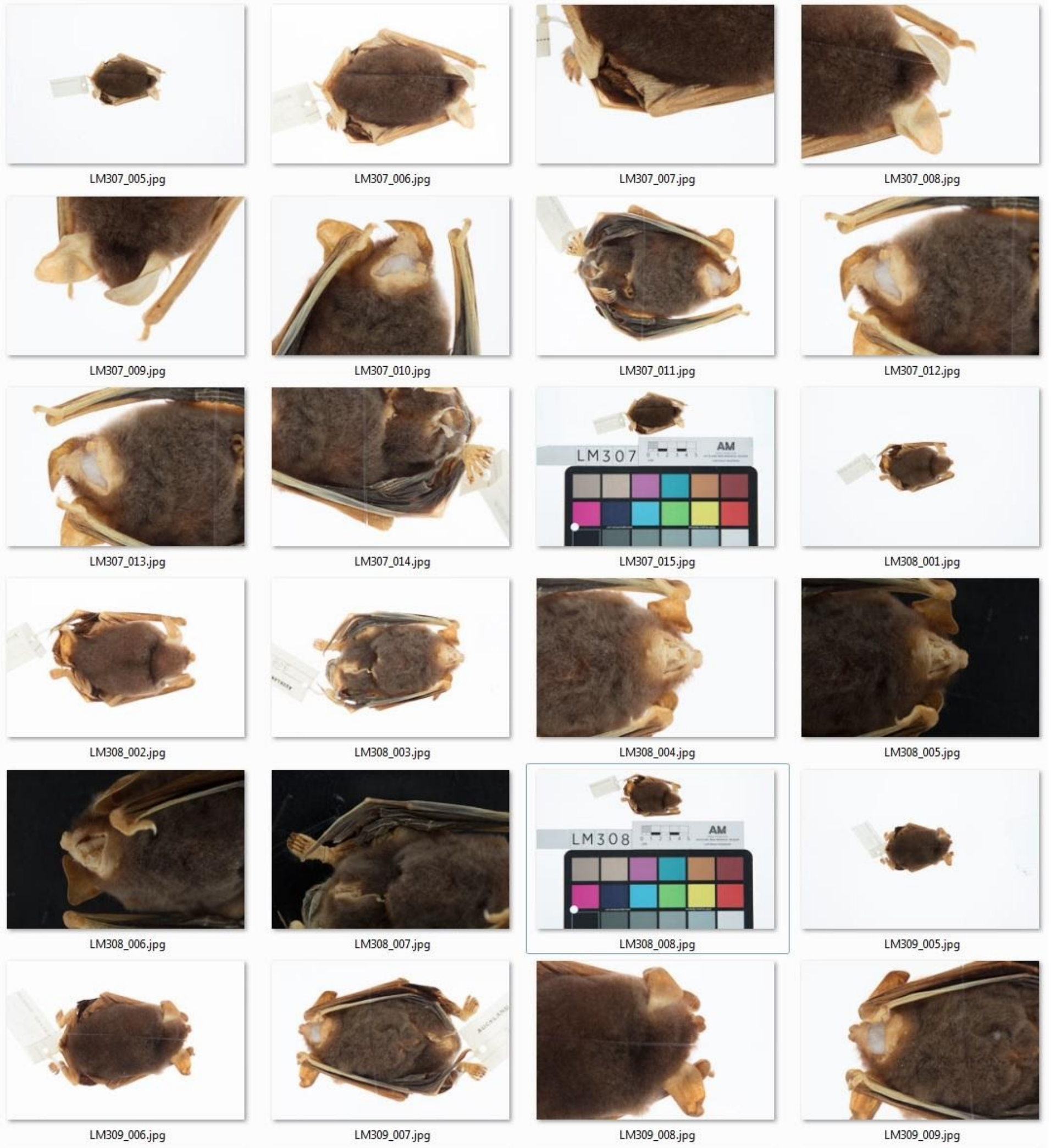
WB: +5250 +10

#	TYPE OF LIGHT	LIGHT MODIFIER	POWER SETTING	NOTES
L1: LHS	Broncolor Siros	75 Octa	8.8	
L2: RHS	Broncolor Siros	75 Octa	8.8	
L3: BACK	Broncolor Siros	90x120 Softbox	8.6	Bottom Table Light

- All specimens were submerged into water tank.
- Water tank is placed over light table with reinforcing Perspex strips to support the weight of the tank over plastic table.
- Water tank is being bottom lit by the table light below. This should be RGB 255 without clipping.
- To minimise diffraction and reflections from the surface of the water, two Octa 75 soft boxes were positioned clear away from the tank – see dotted lines in setup photo 1.
- All shots were taken with the camera directly perpendicular to the water mounted on overhead tripod. Careful to retract lenses when moving tripod to ensure clearance of the high tank walls.
- Some specimens were filled with cotton wool and tends to float. Fishing line was used to brace the specimen and keep them submerged. Glass blocks were used to anchor the line. Glass blocks used as it has minimal shadow cast. ,
- Surface waves will distort captured image – wait till water settles.
- To avoid capturing the stream of alcohol escaping from specimen, you will needed to swirl the water above it without disturbing the specimen then quickly take photo.
- 24-70mm is used for hero and rules shots, 100mm used for close-up and detail shots.
- For more information see Bat Blog published on the Auckland Museum blogs page: <https://www.aucklandmuseum.com/discover/stories/blog/2018/aqua-bats>



FINAL IMAGE



Mystacina tuberculata aupourica, LM307.

Mystacina tuberculata aupourica, LM308.

Mystacina tuberculata aupourica, LM309.