

COLLECTION IMAGING  
LIGHTING SETUP

# FOSSILS – LAND VERTS

# LIGHTING SETUP

**LENS:** 100mm macro, 24-70mm

**APERTURE:** f8

**LIGHT METER:** f8

**WB:** +5300 +13

#	TYPE OF LIGHT	LIGHT MODIFIER	POWER SETTING	NOTES
L1: LHS	Broncolor Siros	60x60 Softbox	7.5	
L2: RHS	Broncolor Siros	90x120 Softbox	6	

- Used for the Mesazoic Fossil collection this setup provides a broad light with good contrast and a clean background with accurate exposure.
- 60x60 is the main, up high on the left hand side of the table. 120x180 provides a broad fill, from behind and right hand side of the table.
- Objects are photographed directly from above, but smaller pieces can be photographed from the side as well as enough light falls on part of the background to make it white.
- A copy stand was used for smaller objects with the 100mm Macro while a tripod and extension arm were used for larger pieces with either the 24-70mm or 100m.



# FINAL IMAGES



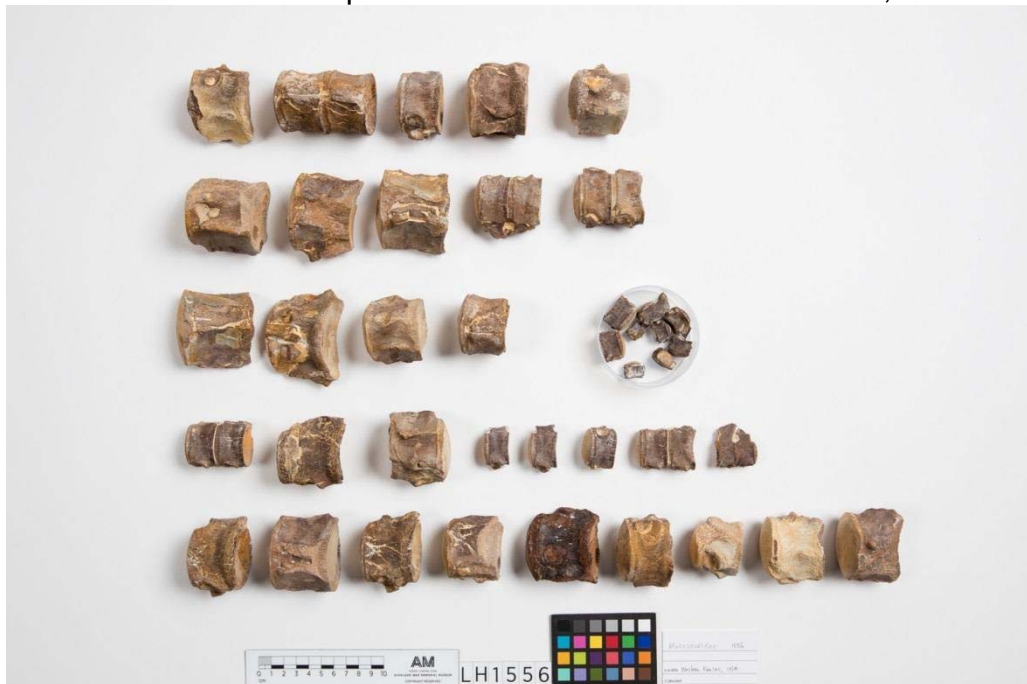
LH3908



*Neusticosaurus pusillus*, LH3908



Chordata Vertebrata Reptilia Plesiosauria PLESIOSAURIDAE, LH1527.



Chordata Vertebrata Reptilia Lacertilia MOSASAURIDAE, LH1556.